



SILVER SPRING CAPE COD COTTAGE

3819 Delano St, Silver Spring, MD 20902

3 Bedrooms + 1.5 Bathrooms «» 1,188 sq. ft. «» Living Space on 3 Levels «» MLS#: MC8563501

LORIN CULVER
Realtor®

when INTEGRITY and
DISCRETION matter

Coldwell Banker
Residential Brokerage
7272 Wisconsin Ave., Suite 100
Bethesda, MD 20814

301.718.0010 Office
301.310.6456 DIRECT

lorin.culver@cbmove.com
www.cbmove.com/lorin.culver

SilverSpringCapeCodCottage.com

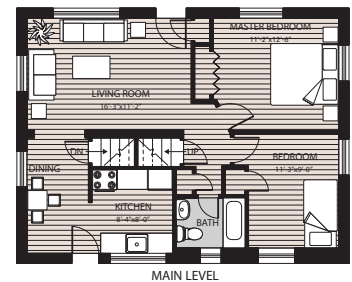
Meticulously maintained, this charming Cape Cod Cottage is tucked onto a tree-lined street in a neighborhood where Wheaton-Glenmont meets North Kensington.

Natural light streams into the **Main Level**, which includes the living and dining rooms, kitchen, two bedrooms and full bath. True to the Cape style, this home has hardwood floors throughout the main and upper levels.

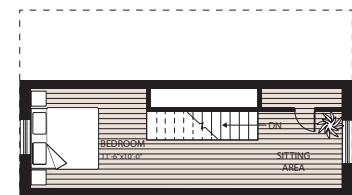
The **Upper Level** bedroom, perfect as a master or guest, features a sitting/study space, complete with built-in bookcases.

Fully finished **Lower Level** features a den/home office, family room, exercise space, and half bath. The laundry room with space for bulk storage has access to the rear yard.

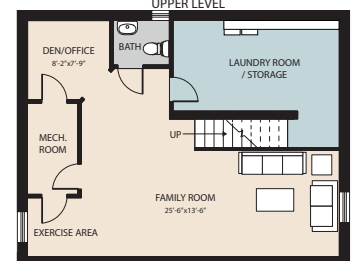
The **Exterior** includes a fenced rear yard with a private patio with room to entertain, secure shed, and grassy play area. Off-street parking is conveniently located on the side yard.



MAIN LEVEL



UPPER LEVEL



LOWER LEVEL

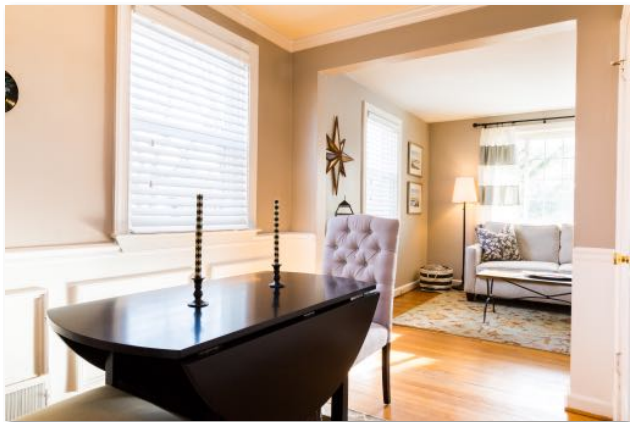
SILVER SPRING CAPE COD COTTAGE.com

3819 Delano St, Silver Spring, MD 20902 «» MLS#: MC8563501

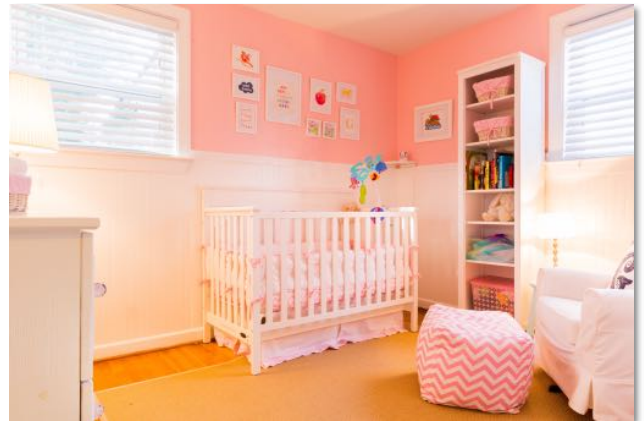


What's not to fall in love with?

- Nearly 1,600 sq. ft. of total living space on three levels (1,188 sq. ft. per tax record + 400 sq. ft. finished)
- Sunny front terrace; perfect location for morning coffee
- Galley kitchen complete with granite countertops and stainless steel appliances
- Freshly painted interior and new window coverings
- New wainscoting in bedroom and dining room

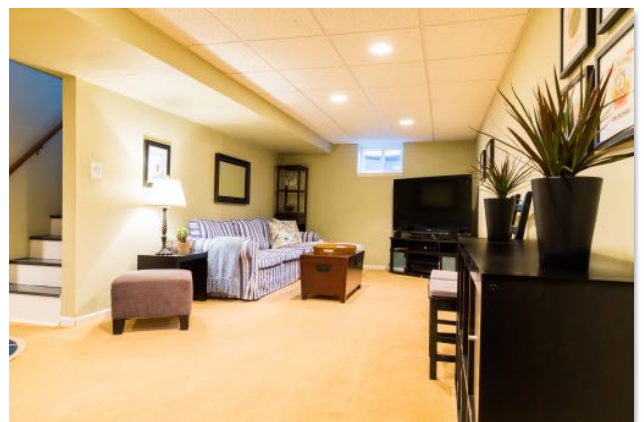


LORIN CULVER | when INTEGRITY and DISCRETION matter
301.310.6456 DIRECT | lorin.culver@cbmove.com



Convenience and Location!

- Convenient access to NIH, Walter Reed, Bethesda, and Washington DC via Connecticut Ave.
- Connecticut Belair Swim & Tennis Club six blocks away
- Direct access to Silver Spring, Washington DC and points south via Veirs Mill to Georgia to 16th St.
- Estimated property tax and other non-tax charges in the first full fiscal year of ownership is \$3,414



The property information herein is derived from various sources that may include, but not be limited to, county records and the Multiple Listing Service and it may include approximations. Although the information is believed to be accurate, it is not warranted and you should not rely upon it without personal verification. Coldwell Banker and the Coldwell Banker Logo are registered service marks of Coldwell Banker Real Estate LLC. Coldwell Banker Residential Brokerage is owned by a subsidiary of NRT LLC. If you have a brokerage relationship with another agency, this is not intended as a solicitation.

