

Best New Listings: A Nearly 4,000 Square-Foot Five-Bedroom in Brookland

by *Nena Perry-Brown*

This week's *Best New Listings* include renovated rowhouses in Hill East and Near Northeast and a nearly 4,000 square-foot five-bedroom in Woodridge.



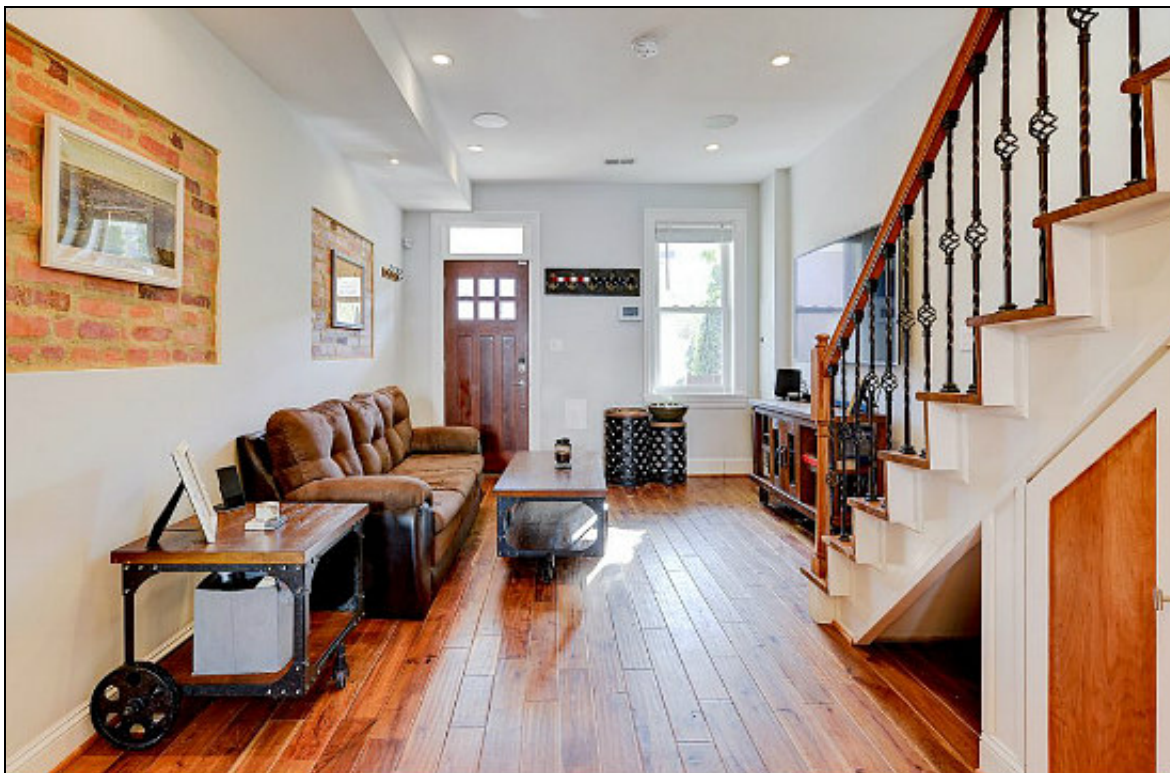
Bonuses Abound in Woodridge Five-Bedroom

This renovated Woodridge bungalow has a full porch and enters into a generous foyer. A sitting room lies just off the foyer, leading to the living room where there is a bay window across from a fireplace. The spacious kitchen has a breakfast bar island and exposed brick pillar next to a glass door, leading out to the expansive backyard. Dormer windows create a cavern-like ceiling in the well-lit attic, which can serve as the fifth bedroom. The lower level has a bedroom and full bath, along with an abundance of recreational space, a second laundry area, and a separate exit. The house also includes other attractive and functional features, like the glass block windows in two of the bathrooms and a narrow bonus room on the second level.

- **Full Listing:** [3308 22nd Street NE \(map\)](#)
- **Price:** \$899,900
- **Bedrooms:** Five
- **Bathrooms:** Five
- **Square Feet:** 3,880

- **Year Built:** 1908
- **Listing Agent:** Mary Magner, Long & Foster Real Estate

Photo courtesy of RealTour.



A Renovated Hill East Rowhouse

This Hill East home underwent a full renovation in 2015. The narrow living area at the front of the house has a pair of exposed brick accent recesses on the long wall opposite the stair, which has a storage nook and small closet beneath. The dining area beyond has another exposed brick accent and its own window above a built-in bar. The one-wall kitchen has stainless steel appliances and an electric stove beneath a hood, enjoying natural light from a pair of doors with paneled glass beneath a row of clerestory windows. A barn door conceals the washer/dryer on the skylit upstairs landing, and the full baths have frameless glass showers. Out back, there is a rear slate patio surrounded by horizontal wood fencing.

- **Full Listing:** [1538 D Street SE \(map\)](#)
- **Price:** \$669,000
- **Bedrooms:** Two
- **Bathrooms:** 2.5
- **Square Feet:** 1,084
- **Year Built:** 1913
- **Listing Agent:** John Coleman, RLAH Real Estate



A 2,000 Square-Foot Three-Bedroom on G Street

Over in Near Northeast, red brick stairs lead up to the front door of this semi-detached rowhouse. The living room at the front of the house has a small bay window nook, and the marble-floored dining area sits two steps below. A deep archway leads to the L-shaped kitchen that has subway-tiled backsplash and a fireplace between an oversized window and the back door that has archtop stained-glass transom windows. Off the skylit upstairs hall, the owner's bedroom has two skylights and a fireplace between two oversized windows with archtop transoms. The en-suite bath has a frameless glass shower across from double vanities with drawers beneath. The lower level is split between a wine cellar and separate storage, while the rear slate fenced-in patio has alley access.

- **Full Listing:** [327 G Street NE \(map\)](#)
- **Price:** \$999,900
- **Bedrooms:** Three
- **Bathrooms:** 2.5
- **Square Feet:** 2,032
- **Year Built:** 1890
- **Listing Agent:** Lorin Culver, Coldwell Banker Residential Brokerage

Correction: The listing on 22nd Street NE is in Woodridge, not Brookland, and the square footage is 3,880, not 4,768.

This article originally published at <https://dc.urbanturf.com/articles/blog/best-new-listings-a-nearly-5000-square-foot-five-bedroom-in-brookland/14778>